

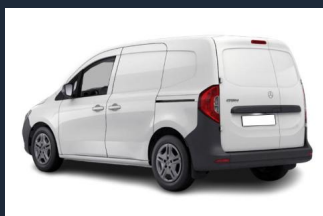


# Vehicle Specification

Presented by Commercial Vehicle Contracts Ltd

<https://commercialvehiclecontracts.co.uk>

## Mercedes eCITAN Van L1 90kW 45kWh Pro Auto



## Technical Details

Engine and Drive Train	
Transmission Type	Automatic
Engine Size	0 cc
Fuel Type	Electric
Fuel Delivery Type	Battery

Emissions	
WLTP - CO2 Combined	0 g/km
Euro Emissions Standard	N/A

Fuel Consumption	
WLTP - Electric Consumption Extra High	27 kWh/62 miles
WLTP - Electric Range Combined Minimum	249 miles
WLTP - Electric Consumption Low	13 kWh/62 miles
WLTP - Electric Consumption Medium	14 kWh/62 miles
WLTP - Electric Consumption High	17 kWh/62 miles
WLTP - Electric Consumption Combined	19 kWh/62 miles
WLTP - Electric Range Combined	175 miles

Performance	
Power	121 BHP / 123 PS / 85 KW
Torque	181 Lb/ft

Dimensions and Weights	
Length	4498 mm
Width	2159 mm
Height	1900 mm
Wheelbase	2716 mm
Ground Clearance	181 mm
Boot Capacity	102.40 cubic feet
Fuel Tank Capacity	
Gross Weight	2230 kg
Kerb Weight	1800 kg

General	
Body Style	Van - Lwb/Exlwb
Doors	5
Seats	2
Insurance Group	50

General	
RFL Rate	£360.00
Standard Front Tyre Size	205/55R16 C
Standard Rear Tyre Size	205/55R16 C
Standard Spare Tyre Size	205/55R16 C
Servicing Indication	No
Service Intervals	
First Service	0 months / 0 miles
Initial Service	12 months / 25000 miles
Subsequent Service	12 months / 25000 miles
Warranties	
Body / Anticorrosion	144 months / 0 miles
Mechanical	36 months / 0 miles
Recovery / Breakdown	36 months / 0 miles

## Standard Equipment

### Audio and Communications

Digital Radio DAB  
Instrument Cluster With Clr Display  
MBUX Multimedia System+9.5 Display  
Smartphone Intergration Package

### Exterior Features

Electric Folding And Adjust Door Mirrors  
Front Foglamps  
Heated Windscreen  
Keyless Go Starting Function  
Rear Parking Aid  
Reversing Camera  
Sliding Load Doors On Left Side  
Twin Rear Doors Open To 180 Degrees

### Interior Features

Cruise Control  
Driver Seat Height Adj+Lumbar Support  
Electric Front Windows+1Tch Operation  
Heated Driver+Co Driver Seat  
Height And Rake Adjustable Steering Whl  
Mode 3 Type 2 Charging Cable  
Plastic Flooring In Passngr Compartment Frnt  
Thermotronic Automatic Climate Control

### Mechanical Features

Bulkhead Full Length Partition  
Electronic Stability Program

### Other

3 Years Unlimited Warranty

### Paint and Trim

Norwich Black Fabric  
Solid Paint

### Safety & Security Features

ABS/ASR  
Active Brake Assist

Safety & Security Features
Active Lane Keeping Assist
Airbags - Thorax Bags
Airbags - Windowbags
Alarm System
Attention Assist B
Blind Spot Assist
Driver Airbag
Passenger Airbag
Traffic Sign Assist B
Wheels
16in 5Twin Spoke Design Alloys

### Important:

The images, specification and technical data relating to this vehicle - and displayed in this document - are compiled and supplied by CAP HPI Limited and International Decision Systems.

Data is sourced from the motor vehicle manufacturer and is updated daily to ensure it is accurate and current. Please note that manufacturers are able to change the specification and technical data of a motor vehicle without prior notice and therefore CAP HPI Limited, International Decision Systems and Commercial Vehicle Contracts Limited are not responsible for the accuracy of the specification or technical data displayed in the document.

The specification may include default manufacturer factory fitted options whereby one or more free of charge option is available on the vehicle, for example a specific type of paint or colour, and the presence or absence of a spare wheel or tyre repair kit.

The images displayed are for guidance only, and may not reflect the specific model quoted. Images may also include non-standard features of the model quoted, and may exclude standard features of the model quoted.

If you have any questions relating to a specific piece of data then please contact your account manager on 01424 863 456 for guidance.



## Why choose a specialist B2B van leasing team?

### Experienced & independent

- ✓ 25+ years experience
- ✓ Unrivalled choice & competitive pricing
- ✓ FCA regulated and full BVRLA member

### In-depth vehicle knowledge

- ✓ We know commercial vehicles inside out
- ✓ One-stop-shop service from funding to van customisation
- ✓ Getting you on the road and fulfilling contracts from day one

### Unmatched service

- ✓ Secure online customer portal available 24/7
- ✓ Experienced account management support
- ✓ Rated 5\* by our delighted customers



From the initial enquiry to the delivery and the aftersales, the service provided by CVC has been second-to-none.

*Customer*



Our vans were delivered within the specified time frame and all expectations were exceeded! We strongly recommend CVC!

*Customer*



We've been trusting CVC with our company cars and refrigerated vans for over 10 years. They've never let us down.

*Customer*



Our account manager, Jimmi, was incredibly helpful. We highly recommend CVC to any business looking to lease a van.

*Customer*

### Phone

Monday to Friday: 8:30am - 5:30pm

[01424 863 456](tel:01424863456)

### Email

Our friendly team is here to help

[hello@commercialvehiclecontracts.co.uk](mailto:hello@commercialvehiclecontracts.co.uk)

### Office

Come and say hello at our HQ:

Commercial Vehicle Contracts Ltd.  
The Landmark  
66 Sackville Road  
Bexhill on sea  
TN39 3FA

[///marker.reward.spot](https://marker.reward.spot)

<https://commercialvehiclecontracts.co.uk>