

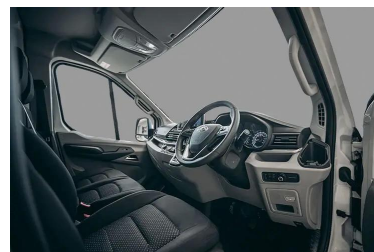
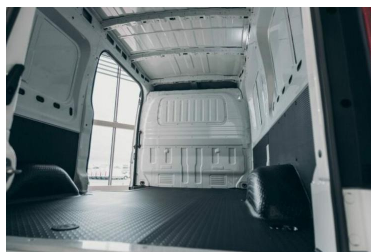


## Vehicle Specification

Presented by Commercial Vehicle Contracts Ltd

<https://commercialvehiclecontracts.co.uk>

## Maxus eDELIVER 9 LH 150kW 88.55kWh



## Technical Details

### Engine and Drive Train

Transmission Type	Automatic
Engine Size	0 cc
Engine Configuration	Electric Motor
Fuel Type	Electric
Fuel Delivery Type	Battery

### Emissions

WLTP - CO2 Combined	0 g/km
Euro Emissions Standard	N/A

### Fuel Consumption

WLTP - Electric Consumption Combined Minimum	30 kWh/62 miles
WLTP - Electric Consumption Combined Maximum	32 kWh/62 miles
WLTP - Electric Range Combined	199 miles
WLTP - Electric City Range Minimum	377 miles
WLTP - Electric City Range Maximum	364 miles
WLTP - Electric Range Combined Minimum	211 miles
WLTP - Electric Range Combined Maximum	199 miles

### Performance

Maximum Speed	62 mph
0 to 62 mph	16.00 s
Power (BHP)	201.00
Power (PS)	203.7900
Power (KW)	140.4600
Torque	243.40 Lb/ft @ rpm

### Dimensions and Weights

Length	5940 mm
Width	2062 mm
Height	2515 mm
Wheelbase	3760 mm
Ground Clearance	190 mm
Boot Capacity	388.50 cubic feet
Fuel Tank Size	l
Gross Weight	3500 kg
Kerb Weight	2590 kg
Max Braked Towing Weight	1500 kg
Max Unbraked Towing Weight	750 kg

General	
Body Style	Van - High Roof
Doors	4
Seats	3
Insurance Group	50
RFL Rate	£345.00
Front Brakes	DISC
Rear Brakes	DISC
Standard Front Tyre Size	215/75R16 C
Standard Rear Tyre Size	215/75R16 C
Standard Spare Tyre Size	215/75R16 C
Service Indication	False
Service Intervals	
First Service	0 months / 0 miles
Initial Service	24 months / 18000 miles
Subsequent Service	24 months / 18000 miles
Warranties	
Mechanical	60 months / 125000 miles
Recovery / Breakdown	60 months / 0 miles

## Standard Equipment

### Audio and Communications

12.3in Touch Screen With MP5

4 Speakers

Bluetooth

DAB

USB

### Exterior Features

Front Fog Lights

Keyless Start+2 Smart Keys

Power Heated Exterior Mirrors

Rear View Camera

Single Sliding Door

### Interior Features

Charging Wire Mode 3 Three Phase

Full Speed ACC

Power Front Windows One Click Up Down

### Mechanical Features

ESP+EBA+HHC

### Paint and Trim

Cloth Upholstery

Solid Paint

### Safety & Security Features

6 Airbags Front+Side+Curtain

Adjustable Overspeed Warning

Auto Emergency Braking System

Blind Spot Detection

Driver Airbag

Driver Monitoring System

Front Passenger Airbag

Lane Change Assist System

Lane Departure Warning System

Lane Keeping Assist System

### Wheels

6.5Jx16in Alloys

**Important:**

The images, specification and technical data relating to this vehicle - and displayed in this document - are compiled and supplied by CAP HPI Limited and International Decision Systems.

Data is sourced from the motor vehicle manufacturer and is updated daily to ensure it is accurate and current. Please note that manufacturers are able to change the specification and technical data of a motor vehicle without prior notice and therefore CAP HPI Limited, International Decision Systems and Commercial Vehicle Contracts Limited are not responsible for the accuracy of the specification or technical data displayed in the document.

The specification may include default manufacturer factory fitted options whereby one or more free of charge option is available on the vehicle, for example a specific type of paint or colour, and the presence or absence of a spare wheel or tyre repair kit.

The images displayed are for guidance only, and may not reflect the specific model quoted. Images may also include non-standard features of the model quoted, and may exclude standard features of the model quoted.

If you have any questions relating to a specific piece of data then please contact your account manager on **01424 863 456** for guidance.



## Why choose a specialist B2B van leasing team?

### Experienced & independent

- ✓ 25+ years experience
- ✓ Unrivalled choice & competitive pricing
- ✓ FCA regulated and full BVRLA members

### In-depth vehicle knowledge

- ✓ We know commercial vehicles inside out
- ✓ One-stop-shop service from funding to van customisation
- ✓ Getting you on the road and fulfilling contracts from day one

### Unmatched service

- ✓ Secure online customer portal available 24/7
- ✓ Experienced account management support
- ✓ Rated 5\* by our delighted customers



From the initial enquiry to the delivery and the aftersales, the service provided by CVC has been second-to-none.

Customer



Our vans were delivered within the specified time frame and all expectations were exceeded! We strongly recommend CVC!

Customer



We've been trusting CVC with our company cars and refrigerated vans for over 10 years. They've never let us down.

Customer



Our account manager, Jimmi, was incredibly helpful. We highly recommend CVC to any business looking to lease a van.

Customer

### Phone

Monday to Friday: 8:30am - 5:30pm

[01424 863 456](tel:01424863456)

### Email

Our friendly team is here to help

[hello@commercialvehiclecontracts.co.uk](mailto:hello@commercialvehiclecontracts.co.uk)

### Office

Come and say hello at our HQ:

Commercial Vehicle Contracts Ltd.  
The Landmark  
66 Sackville Road  
Bexhill on sea  
TN39 3FA

[///marker.reward.spot](https://marker.reward.spot)

<https://commercialvehiclecontracts.co.uk>