

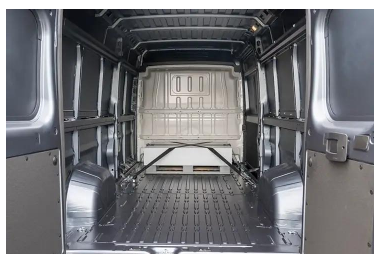


## Vehicle Specification

Presented by Commercial Vehicle Contracts Ltd

<https://commercialvehiclecontracts.co.uk>

## Vauxhall MOVANO VAN L2H2 3500 2.2 TB D 140 PRIME



## Technical Details

### Engine and Drive Train

Transmission Type	Manual
Engine Size	2184 cc
Engine Configuration	4 Cylinder In-Line
Fuel Type	Diesel
Fuel Delivery Type	Turbo
Gears	6

### Emissions

WLTP - CO2 Combined Maximum	240 g/km
WLTP - CO2 Combined Minimum	169 g/km
WLTP - CO2 Combined	169 g/km
Euro Emissions Standard	EURO 6

### Fuel Consumption

WLTP - MPG Combined Maximum	31 MPG
WLTP - MPG Combined Minimum	44 MPG

### Performance

Maximum Speed	mph
Power (BHP)	138.00
Power (PS)	139.9200
Power (KW)	96.4400
Torque	258.20 Lb/ft @ 1400 rpm

### Dimensions and Weights

Length	5413 mm
Width	2690 mm
Height	2522 mm
Wheelbase	3450 mm
Ground Clearance	158 mm
Boot Capacity	406.10 cubic feet
Fuel Tank Size	90.00 l
Gross Weight	3500 kg
Kerb Weight	2025 kg
Max Braked Towing Weight	2500 kg

### General

Body Style	Van - Lwb/Exlwb
Doors	4
Seats	3
Insurance Group	16

RFL Rate	£345.00
Front Brakes	VENT DISC
Rear Brakes	DISC
Standard Front Tyre Size	215/70R15 C
Standard Rear Tyre Size	215/70R15 C
Standard Spare Tyre Size	
Service Indication	False
<b>Service Intervals</b>	
First Service	0 months / 0 miles
Initial Service	12 months / 16000 miles
Subsequent Service	12 months / 16000 miles
<b>Warranties</b>	
Body / Anticorrosion	72 months / 0 miles
Mechanical	36 months / 100000 miles
Recovery / Breakdown	12 months / 0 miles

## Standard Equipment

### Audio and Communications

5in Colour Touchscreen AM+FM Radio  
Bluetooth  
DAB Digital Radio  
USB Connection

### Exterior Features

360 Degree Perimeter Parking Sensor  
Deadlocks  
Digital Rear View Camera  
Electrl AdjstblHtd Dr Mrs Wth Twn Lenses  
Nearside Sliding Side-Access Door  
Rear Parking Sensor  
Twin Unglazed Rear Doors 180 Dgr Opening

### Interior Features

Adjustable Drivers Seat+Lumbar+Armrest  
Air Conditioning-Manual  
Cruise Control With Speed Limiter  
Electric Front Windows

### Mechanical Features

Electronic Power Steering  
Electronic Stability Control  
Front+Rear Suspension  
Full-Height Steel Bulkhead  
Start And Stop

### Paint and Trim

Kaolin White Solid Paint  
Mid Level Fabric Upholstery

### Safety & Security Features

Advanced Emergency Braking System  
Anti-Lock Braking System  
Blind Spot Warning System  
Double Passengers Airbags  
Driver Airbag  
Driver Drowsiness Detection  
Intelligent Speed Assist  
Intelligent Speed Assist  
Lane Support System

Moving Off Information System
Pedestrian Warning Speaker
Perimeter Alarm
Post Collision Braking System
Traffic Sign Recognition

**Important:**

The images, specification and technical data relating to this vehicle - and displayed in this document - are compiled and supplied by CAP HPI Limited and International Decision Systems.

Data is sourced from the motor vehicle manufacturer and is updated daily to ensure it is accurate and current. Please note that manufacturers are able to change the specification and technical data of a motor vehicle without prior notice and therefore CAP HPI Limited, International Decision Systems and Commercial Vehicle Contracts Limited are not responsible for the accuracy of the specification or technical data displayed in the document.

The specification may include default manufacturer factory fitted options whereby one or more free of charge option is available on the vehicle, for example a specific type of paint or colour, and the presence or absence of a spare wheel or tyre repair kit.

The images displayed are for guidance only, and may not reflect the specific model quoted. Images may also include non-standard features of the model quoted, and may exclude standard features of the model quoted.

If you have any questions relating to a specific piece of data then please contact your account manager on **01424 863 456** for guidance.



## Why choose a specialist B2B van leasing team?

### Experienced & independent

- ✓ 25+ years experience
- ✓ Unrivalled choice & competitive pricing
- ✓ FCA regulated and full BVRLA members

### In-depth vehicle knowledge

- ✓ We know commercial vehicles inside out
- ✓ One-stop-shop service from funding to van customisation
- ✓ Getting you on the road and fulfilling contracts from day one

### Unmatched service

- ✓ Secure online customer portal available 24/7
- ✓ Experienced account management support
- ✓ Rated 5\* by our delighted customers



From the initial enquiry to the delivery and the aftersales, the service provided by CVC has been second-to-none.

Customer



Our vans were delivered within the specified time frame and all expectations were exceeded! We strongly recommend CVC!

Customer



We've been trusting CVC with our company cars and refrigerated vans for over 10 years. They've never let us down.

Customer



Our account manager, Jimmi, was incredibly helpful. We highly recommend CVC to any business looking to lease a van.

Customer

### Phone

Monday to Friday: 8:30am - 5:30pm

[01424 863 456](tel:01424863456)

### Email

Our friendly team is here to help

[hello@commercialvehiclecontracts.co.uk](mailto:hello@commercialvehiclecontracts.co.uk)

### Office

Come and say hello at our HQ:

Commercial Vehicle Contracts Ltd.  
The Landmark  
66 Sackville Road  
Bexhill on sea  
TN39 3FA

[///marker.reward.spot](https://marker.reward.spot)

<https://commercialvehiclecontracts.co.uk>